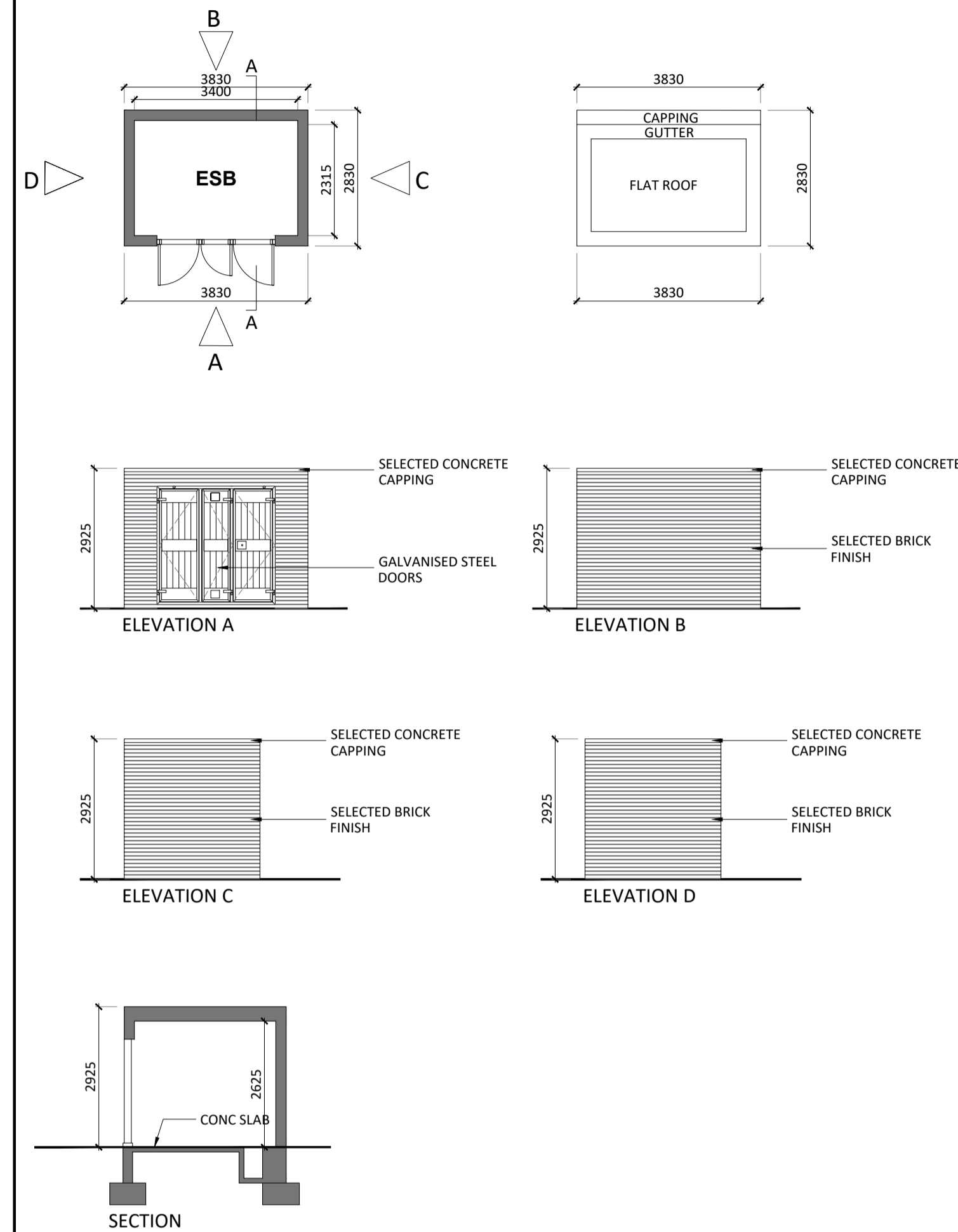
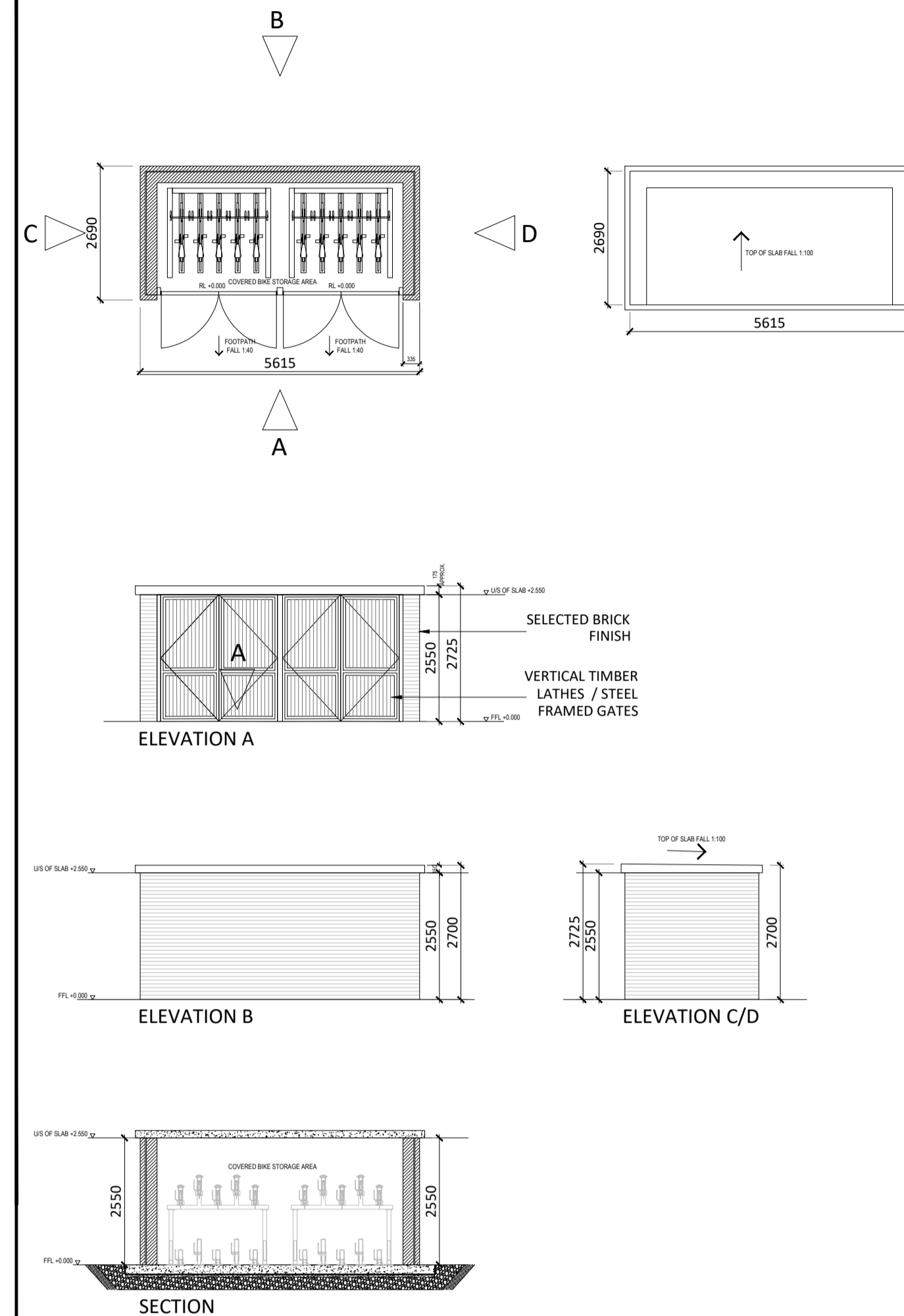
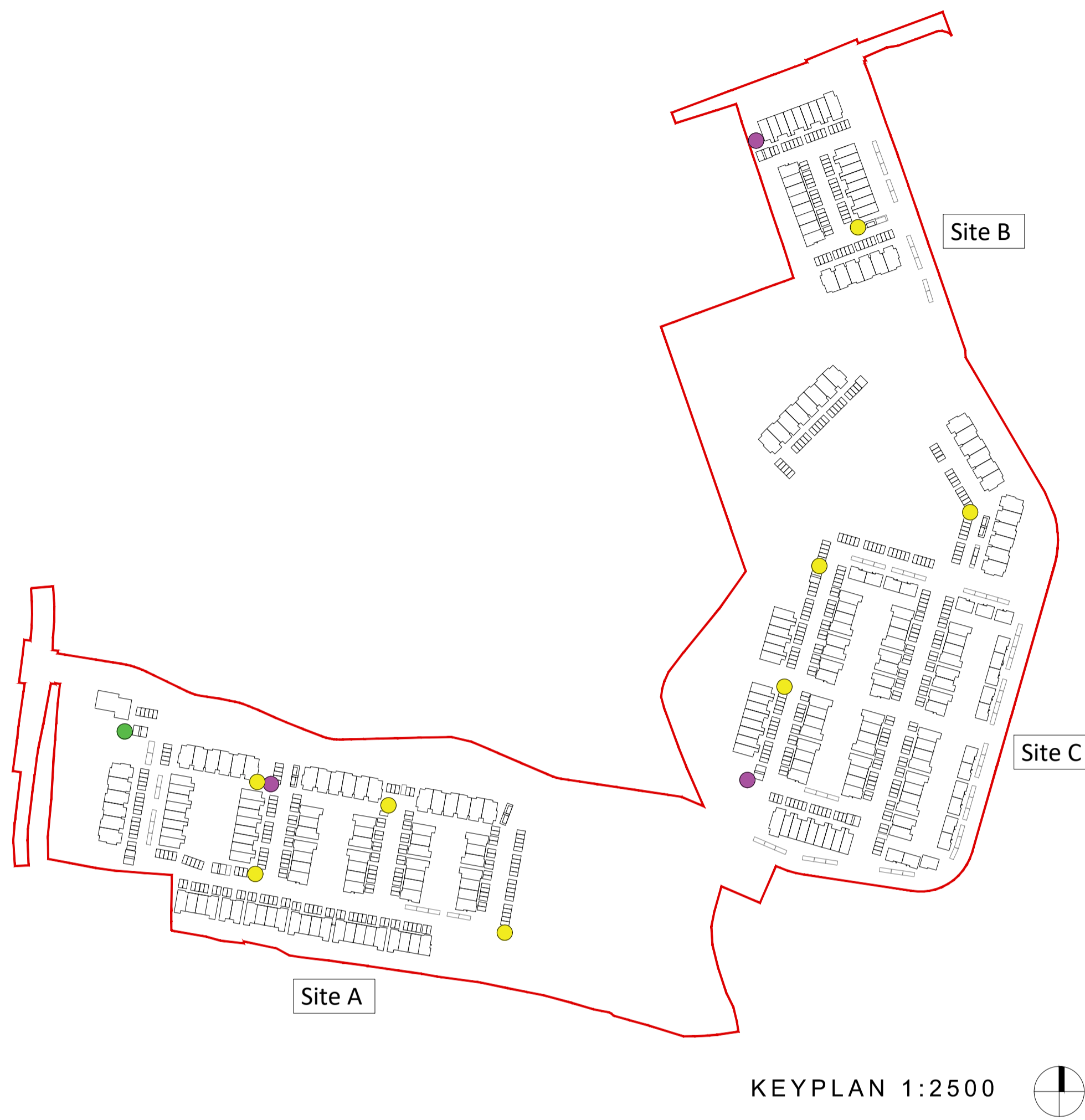


UNIT LOCATIONS SCALE: 1:2500

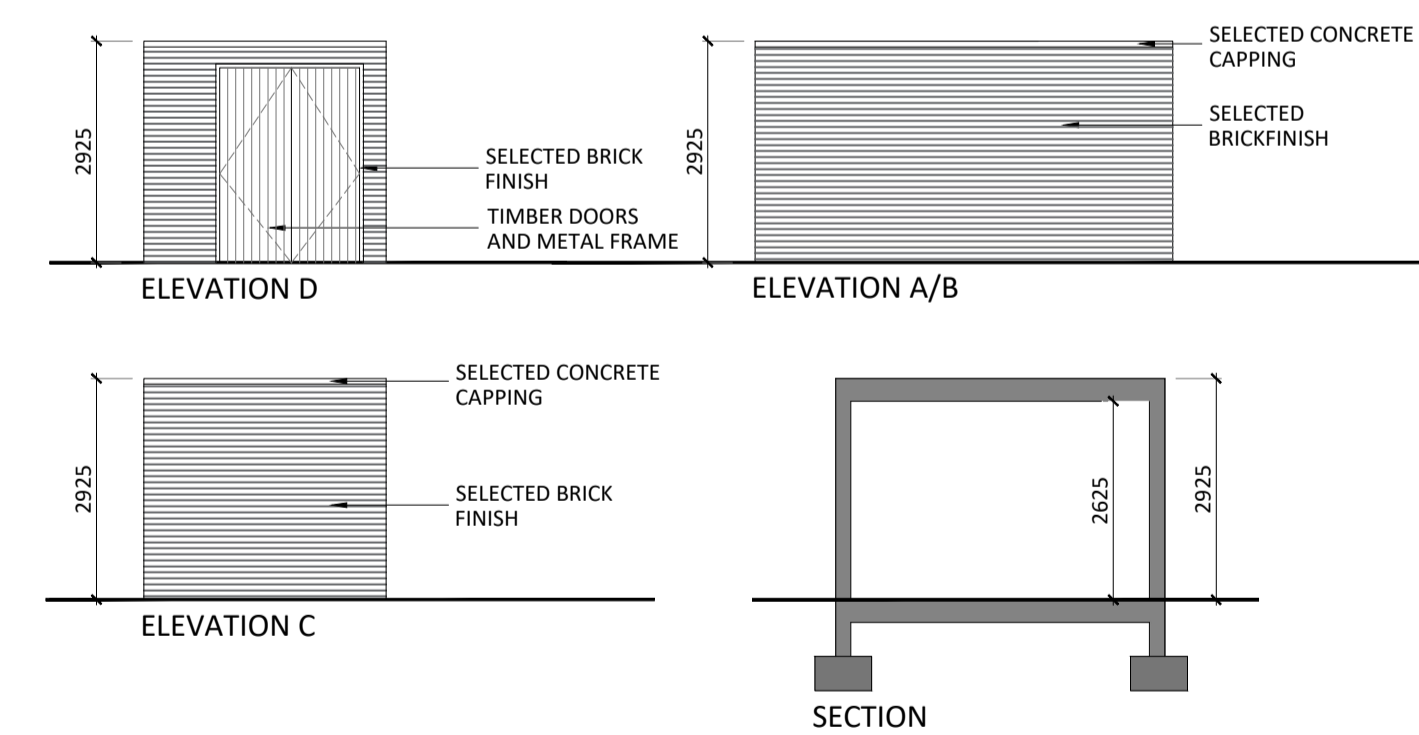
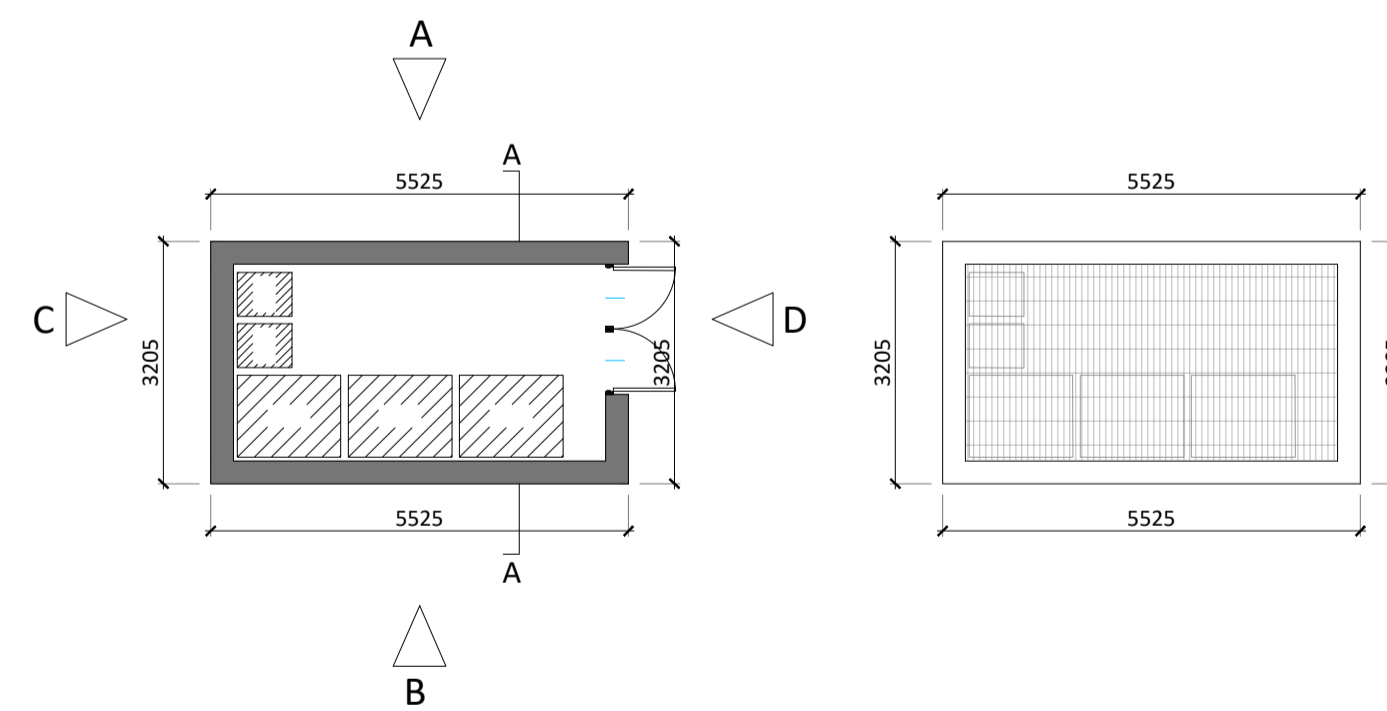
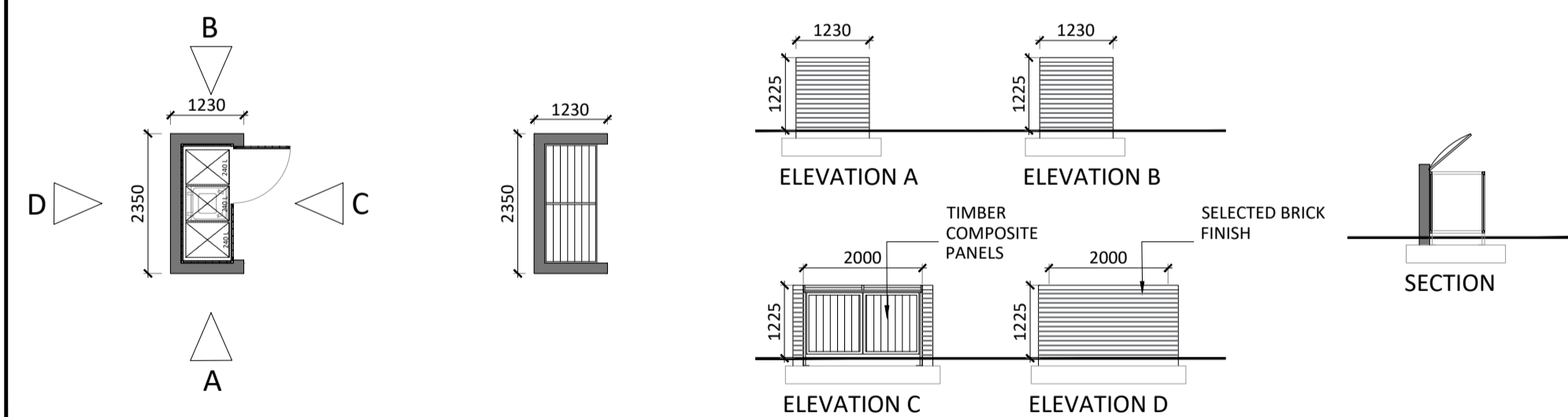
COMMUNAL BIKE STORE TYP.

ESB SUBSTATION TYP.



PRIVATE BIN STORES (LOCATED AT ALL TYP. UNITS)

COMMUNAL BIN STORE (FOR CHILDCARE FACILITY USE ONLY)



Bicycle Stores, Bin Stores & Sub Stations - Plans, Sections & Elevations

- COMMUNAL BIKE STORE (8NO. TOTAL)
- ESB SUB STATION (3NO. TOTAL)
- COMMUNAL BIN STORE LOCATED AT CHILDCARE FACILITY (1NO.)

NOTE:
In Addition to the communal structures private cycle parking is provided on curtilage for Duplexes and apartments near entrances as illustrated within typology drawings.

Revision Description	Date	Rev. No.	Issued by

mahony pike

architecture | urban design
 email: info@mahonypike.com
 tel: +353 1 202 7400
 fax: +353 1 283 0822
 www.mahonypike.com

Project No.: 20007
Project Lead: DMD
Drawn By: KÓC
Model No.: 20007-OMP-00-00-DR-A-5000
Purpose: Planning

Project: Ballyoulster SHD (Phase 1)
Location: Ballyoulster, Celbridge, Co. Kildare
Client: Kieran Curtin, Receiver over certain assets of Maplewood Developments Unlimited Company (in liquidation and in receivership)

Drawing Title: Bike/Bin Stores & Sub Stations - Plans, Sections & Elevations
Drawing No.: 20007-OMP-00-00-DR-A-5000

Figured dimensions only to be used. This drawing is copyright of O'Mahony Pike Architects Ltd. All information is shared as per approved use in accordance with BS1192(2007) + A2(2016), Table 5; Standard Codes for Suitability of Models and Documents. If 'Information Approval Check' is empty, this information has been shared at S0 - WIP.

Suitability - Checked By - Date